



REC# : 752829

RECORDED 5/8/2019 AT 1:19 PM BK# 2620 PG# 1871
Debra K. Lee, CLERK OF LARAMIE COUNTY, WY PAGE 1 OF 1

STATE OF WYOMING CORNER RECORD

(In compliance with the CORNER PERPETUATION AND FILING ACT, Wyoming Statutes, 1997 Section 33-29-140, et. seq., and the Rules and Regulations of the Board of Registrations for Professional Engineers and Professional Land Surveyors)

NORTH QUARTER CORNER SECTION 22, T. 18 N., R. 63 W., 6TH P.M., LARAMIE COUNTY, WYOMING

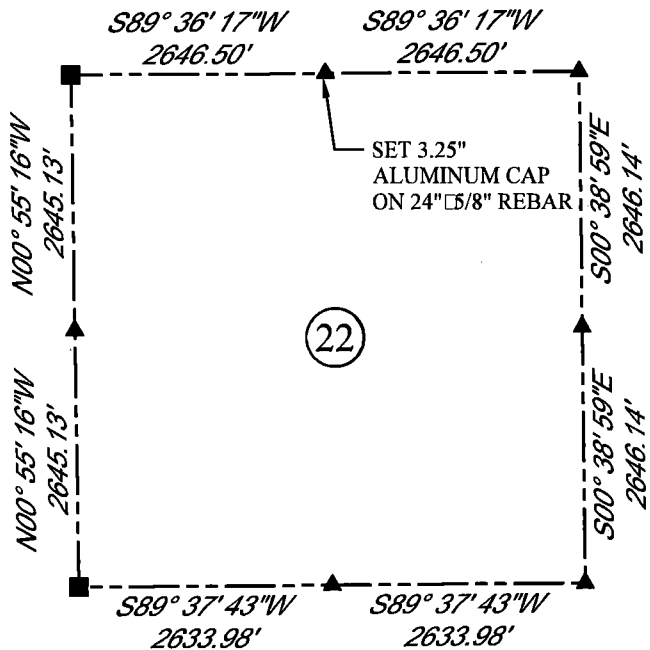
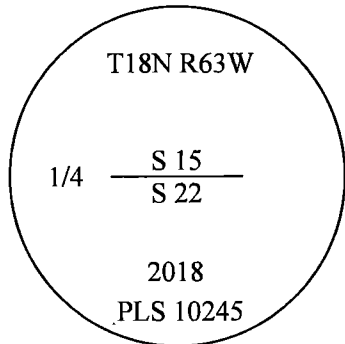
GLO: SET A SANDSTONE 16X12X3, 10 IN. DEEP, MARKED 1/4 ON N. SIDE FOR 1/4 SEC. COR.

FOUND: NOTHING. SET ALUMINUM CAP AT PROPORTIONATE(SINGLE) DISTANCE.



SCALE: NONE
NORTH DETERMINED BY
G.P.S OBSERVATIONS

SET 3.25" ALUMINUM CAP ON #5
REBAR, 2" ABOVE SURFACE,
STAMPED AS SHOWN. PLACED
A SMALL MOUND OF STONES
ON NORTH SIDE OF CORNER



LEGEND:

- FOUND BLM CAP
- FOUND USFS CAP
- FOUND STONE
- FOUND PRIVATE MONUMENT
- ◆ CALCULATED POSITION
- ▲ SET MONUMENT (LS10245)
- SECTION LINE

DATE OF FIELD WORK: 9/24/2018 OFFICE REFERENCE: MERIDEN

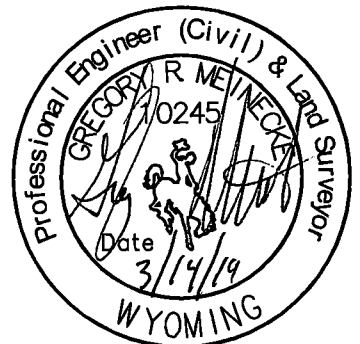
CROSS INDEX DIAGRAM

	1	2	3	4	5	6	7	8	9	10	11	12	13	14	15	16	17	18	19	20	21	22	23	24	25	
A																										
B																										
C		6																								
D			5																							
E				4																						
F					3																					
G						2																				
H							1																			
I																										
J																										
K																										
L																										
M																										
N																										
O																										
P																										
Q																										
R																										
S																										
T																										
U																										
V																										
W																										
X																										
Y																										
Z																										
	1	2	3	4	5	6	7	8	9	10	11	12	13	14	15	16	17	18	19	20	21	22	23	24	25	

WOOD
2615 AVIATION DRIVE
SHERIDAN, WY 82801
PH: 307-675-6400

THIS CORNER RECORD WAS
PREPARED BY ME OR UNDER
MY DIRECTION AND
SUPERVISION,
SEAL AND SIGNATURE

wood.



CORNER NAME: NORTH QUARTER SECTION: 22 T. 18 N., R. 63 W. ; 6TH P.M. CROSS-INDEX # N-15
SBRPELS/PLSW: MARCH 1994; PLSW JANUARY 1998